

SAFE.
SEAMLESS.
STUNNING.

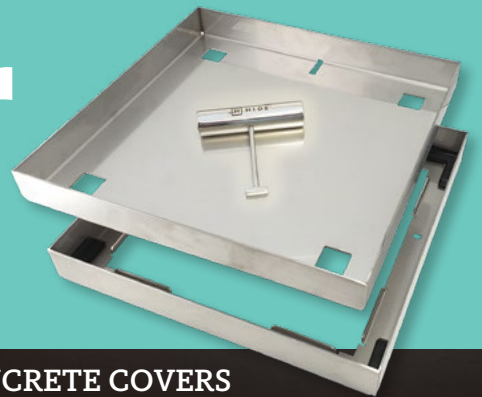


Integrated, seamless covers that blend into your landscape.

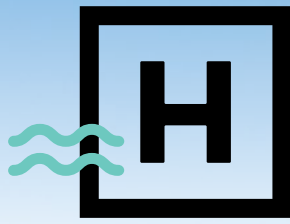


Hidden Skimmer Covers

Good design is obvious.
Great design is invisible!



SKIMMER LIDS | ACCESS COVERS | DRAIN COVERS | CONCRETE COVERS

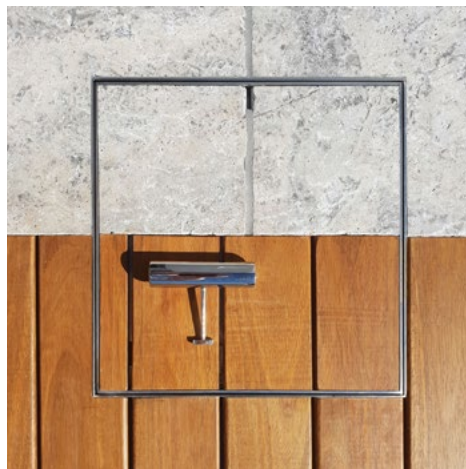


H I D E™

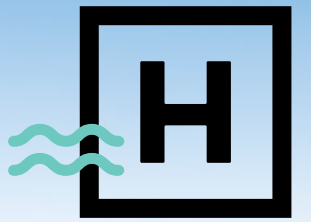
ATTENTION TO DETAIL FOR A HIGH-END FINISH!

HIDE Covers are designed to have any surface material installed into the cover, enabling it to blend into the landscape, creating a luxurious, uninterrupted outdoor space.

HIDE's innovative covers for skimmer boxes, access points and drain covers allow a sophisticated upmarket finish. HIDE Kits are available in a comprehensive range of sizes, to suit many applications.

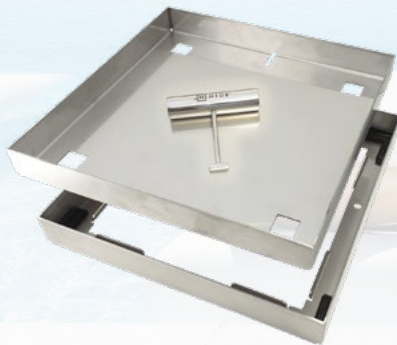


SKIMMER LIDS | ACCESS COVERS | DRAIN COVERS | CONCRETE COVERS

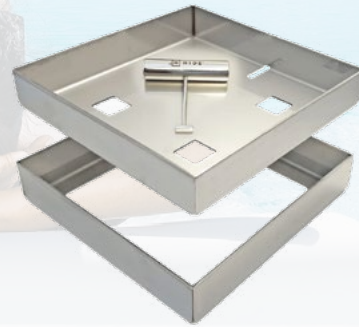


H I D E™

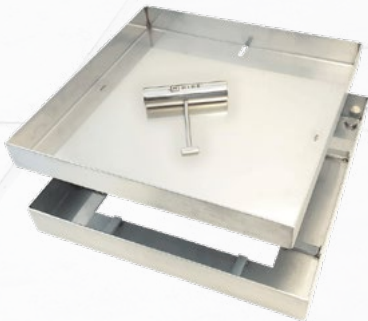
**ALL HIDE COVERS ARE
MADE FROM 316L MARINE GRADE
STAINLESS STEEL**



Pool **Skimmer Cover**



Landscape **Access Cover**



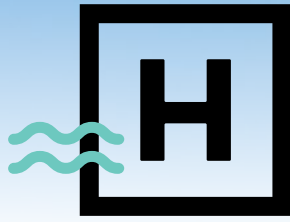
Patio **Drain Cover**



Wet-pour **Concrete Cover**

Discuss HIDE installation at the early stages of your new landscape design.
Specify HIDE for install in pedestrian areas only.

SKIMMER LIDS | ACCESS COVERS | DRAIN COVERS | CONCRETE COVERS

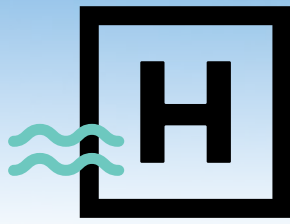


H I D E™

HIDE COVERS COME IN A RANGE OF SIZES AND DEPTHS



SKIMMER LIDS | ACCESS COVERS | DRAIN COVERS | CONCRETE COVERS



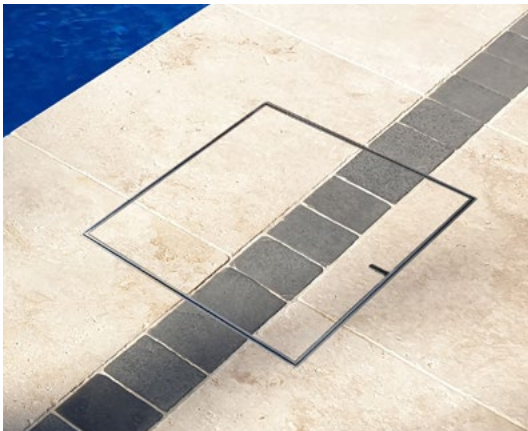
H I D E™

Products

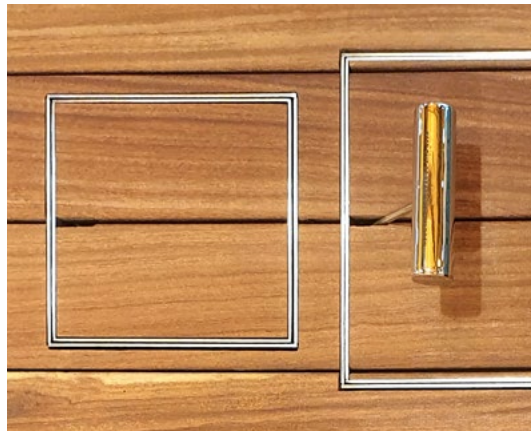


Many external applications- All made from 316L stainless steel

Pool **Skimmer Lids**



Landscape **Access Covers**



Patio **Drain Covers**

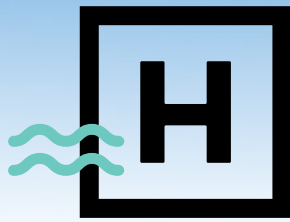


Wet-pour **Concrete**



All can have almost any material installed into the lid including wet-pour concrete.

SKIMMER LIDS | ACCESS COVERS | DRAIN COVERS | CONCRETE COVERS



H I D E™



Skimmer Lids

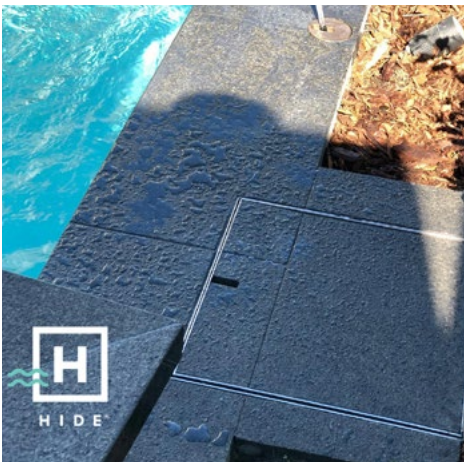


Hidden Skimmer Covers are designed to beautify and protect your investment.

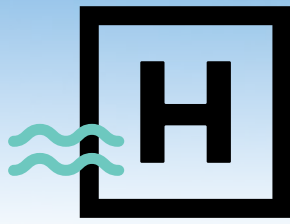
HIDE Skimmer covers blend right into the poolside and allow your eye to be drawn to features and not the cover.

They cannot be opened without the safety key so they are safe around children.

- Matches the surrounding landscape
- Available in a selection of sizes and depths.
 - Pool safe compliant
- Eliminates stone/tile chipping & cracking
 - Sold as a complete kit
- Replaces a traditional plastic lid



SKIMMER LIDS | ACCESS COVERS | DRAIN COVERS | CONCRETE COVERS



H I D E™



Access Covers

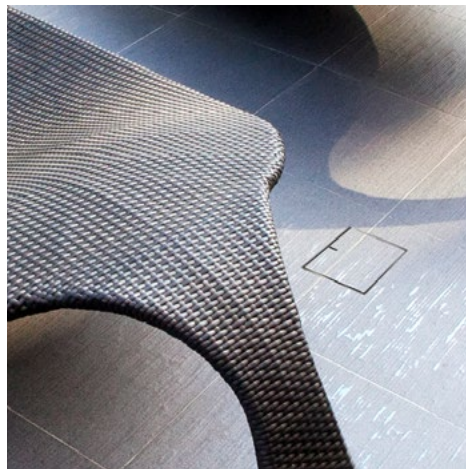


HIDE Access Covers are designed to conceal service points in your outdoor areas.

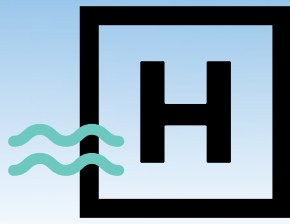


- Available in a selection of sizes and depths.
- IO & Bolted trap screw (BTS)
 - Water table pipe
- Water and balance tanks
 - Taps and irrigation
 - Valves and meters
- Electrical junction box

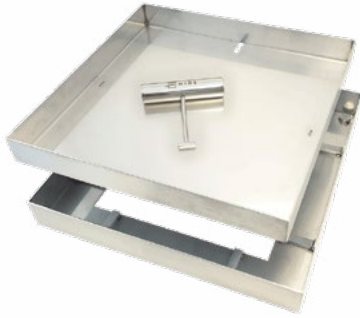
HIDE is specified for install in pedestrian areas.



SKIMMER LIDS | ACCESS COVERS | DRAIN COVERS | CONCRETE COVERS



H I D E™



Drain Covers

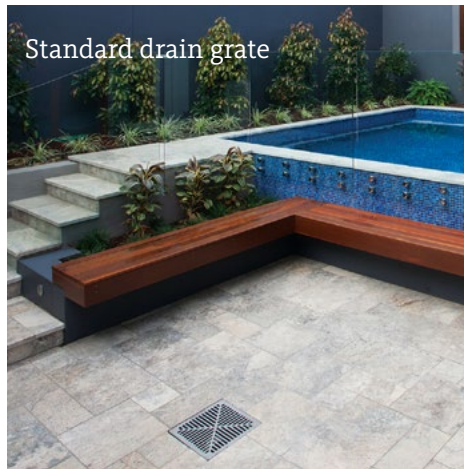


HIDE Drain covers allow for your chosen landscape material to seamlessly conceal the drain access, resulting in a visually appealing and discreet service cover.

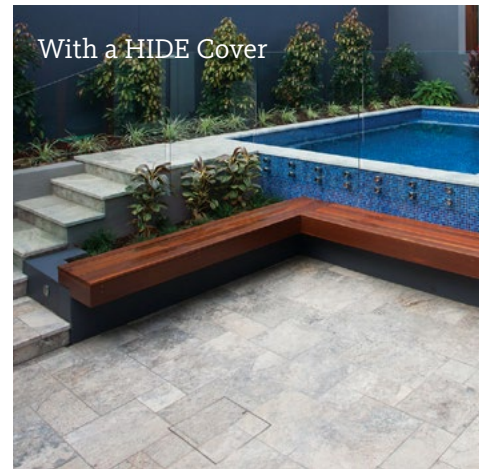
HIDE Drain Cover Kits are designed to allow water to flow from outdoor patio areas providing long term durability and improved visual appeal.

Consult your drain layer for site water flow and outlet suitability.

HIDE is specified for install in pedestrian areas.

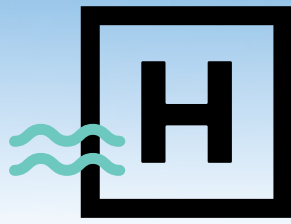


Standard drain grate



With a HIDE Cover

SKIMMER LIDS | ACCESS COVERS | **DRAIN COVERS** | CONCRETE COVERS



H I D E™



Concrete Covers

All applications including drain covers

The HIDE Concrete Cover with specially designed Edge Protector, provide the perfect solution for a concrete finish.

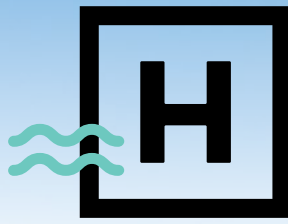
The cover is filled and finished at the same time as the pool surrounds. This ensures the lid perfectly matches the selected surface finish in texture and color.

If you are finishing your landscape in a decorative concrete, the HIDE Concrete Skimmer Cover is the only product for you!

- Available in a selection of sizes and depths.
- Easily add part concrete, part stone/tile coping to match surrounds if desired



SKIMMER LIDS | ACCESS COVERS | DRAIN COVERS | CONCRETE COVERS



H I D E

Concrete Covers Dual Inlay



The beauty of the concrete removable lugs is that you can mix and match your materials into the lid. This means you can match the concrete hardscape with the pool coping through the lid.

- Every concrete kit comes with removable lugs, making it suitable for concrete.
 - Also available as a drain cover
 - Removable Lugs and key slot formers



SKIMMER LIDS | ACCESS COVERS | DRAIN COVERS | CONCRETE COVERS

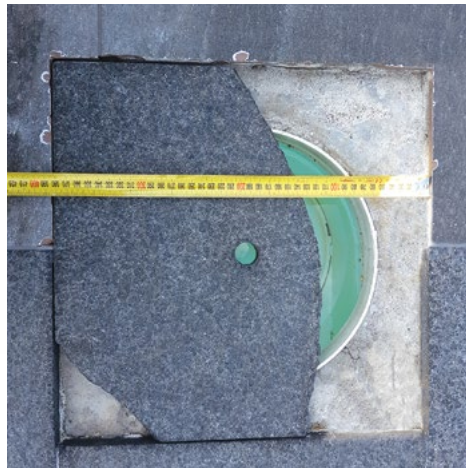
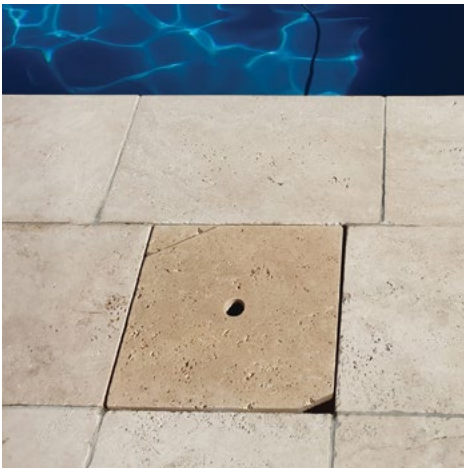


Safe & Strong

Every HIDE Kit comes with the required safety key/s



The Safety Key easily operates all HIDE lids & covers.
Key is heavy duty, welded and constructed from marine grade stainless steel.
Contractor keys readily available for pool service technicians.



Not all skimmer covers were created equal.

Traditional skimmer lid options have plenty of quality and safety concerns, which can cause serious headaches for homeowners and contractors alike. What's worse, is that many don't even meet relevant

Pool Safety Standards!

Stone fades and breaks, so replacing broken loose stone covers isn't an option.

SKIMMER LIDS | ACCESS COVERS | DRAIN COVERS | CONCRETE COVERS



Installation

While it's easier to install a HIDE Cover into a new pool, they can be retrofitted without too many problems.

The simple design allows for easy and affordable installation, on-site by a contractor.

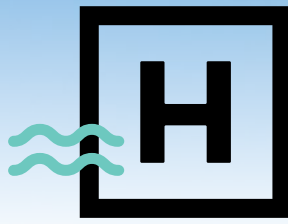


New pool build, allowing for the depth of the Edge Protector



This retrofit took about 90 minutes. It all depends on the material to cut out and skill of the operator.

SKIMMER LIDS | ACCESS COVERS | DRAIN COVERS | CONCRETE COVERS



H I D E

What's in the kit

Every kit contains all the components for a no-fuss assembly, resulting in a superior finish.

Just install your chosen inlay material into the cover.

Off the shelf - HIDE Kit



SKIMMER LIDS | ACCESS COVERS | DRAIN COVERS | CONCRETE COVERS



Skimmer Lids

26 Link Drive, Yatala, Queensland 4207