

# ALLSTONE

NATURAL STONE SPECIALISTS

## FRENCH PATTERN PAVING

Specification

### VISIT OUR SHOWROOM

211 Devonport Terrace Prospect SA 5082

[info@allstone.com.au](mailto:info@allstone.com.au)

Tel: 08 8344 5575

[allstone.com.au](http://allstone.com.au)





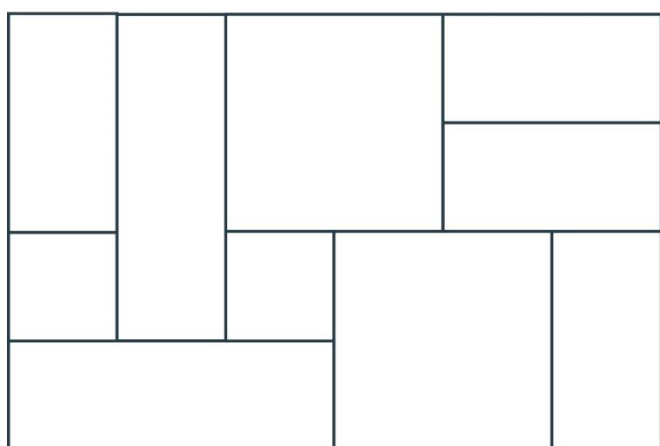


Limestone Avignon Pavers and Coping

French patterns are formed by blending a mix of square and rectangular shapes. Due to this variation, French patterns add an aged, provincial style to your space. This effect can be further amplified with split face textures or tumbled edges.

The trick to creating a natural, fluent look in a French pattern design is to keep the lay pattern random, continually mixing up the arrangement, rather than having a repeating motif.

### STONE FORMAT



### STONE FACE TEXTURES



### EDGE OPTIONS



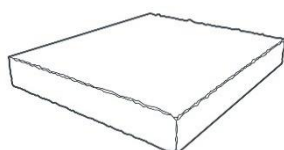
BULLNOSE



PENCIL EDGE

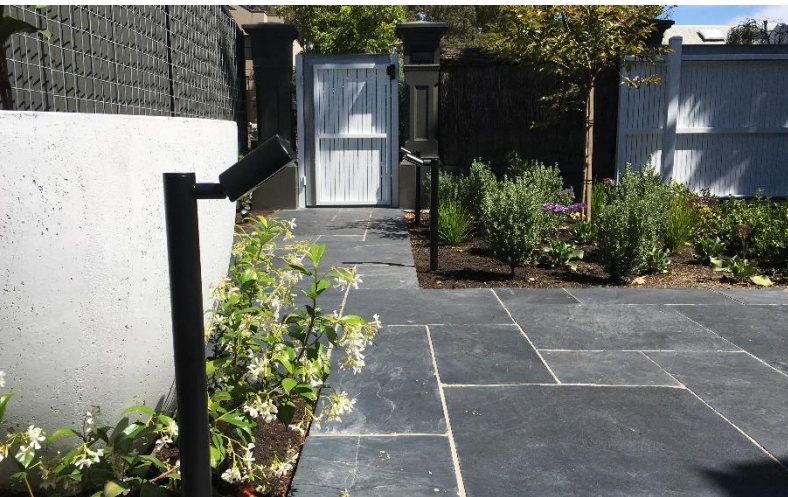


SAWN



TUMBLED





Slate Storm Grey Pavers



Travertine Muscovado Pavers



Limestone Provence Pavers



Slate Storm Grey Pavers

STONE	PRODUCT NAME	FINISH	FORMAT	EDGE
<b>Limestone</b>	Avignon	Split Face	French Pattern, nominal 25mm	T
	Avignon	Split Face	900 x 300 x 30	T, B
	Lunar Grey	Antique	French Pattern, nominal 20mm	T
	Provence	Enhanced	French Pattern, nominal 25mm	T
	Provence	Enhanced	800 x 500 x 20	T
<b>Travertine</b>	Muscovado	Enhanced	French Pattern Paving, nominal 30mm	T
	Muscovado	Enhanced	610 x 330 x 30	T, B
<b>Travertine Marble</b>	Savannah	Enhanced	French Pattern Paving, nominal 25mm	T
	Savannah	Enhanced	900 x 300 x 30	½ B

BULLNOSE            **B**  
 ½ BULLNOSE        **½ B**  
 TUMBLED             **T**

Please note in addition to specifying a product, the installation pattern and pointing style should also be specified. Please contact us for further information about weight, pricing, laying styles and imagery.